



APPLICATIONS



Driving applications development with innovative solutions to increase productivity such as the patented Mustang High Power Planar Cathodes, RF Rotatable Cathodes, Thermal Evaporation Sources and innovative automation and control solutions.

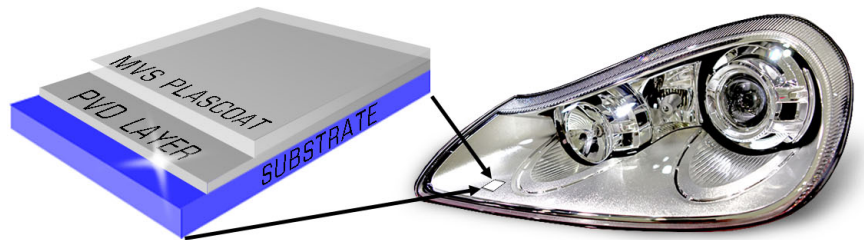
TYPICAL APPLICATIONS

- Automotive Lighting
- Automotive Wheels
- Decorative
 - Automotive Interior/Exterior Trim
 - Cosmetics
 - More...
- EMI/RFI Shielding
- LED Lighting Fixtures
- Electroplate Replacement
- Tribological (Hard Coatings)
- Optics

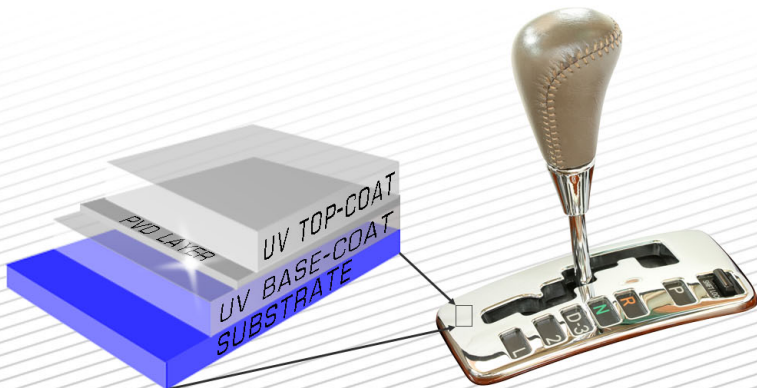
PROCESS STEPS

	LOAD SUBSTRATE	UV CURED BASE-COAT	PLASMA PRE-TREATMENT	PVD LAYER	MVS PLASCOAT	UV CURED TOP-COAT
AUTOMOTIVE LIGHTING	✓		✓	✓	✓	
ELECTROPLATE REPLACEMENT		✓		✓		✓
MULTI-LAYER	✓		✓	✓+		
TRIBOLOGICAL	✓		✓	✓+		

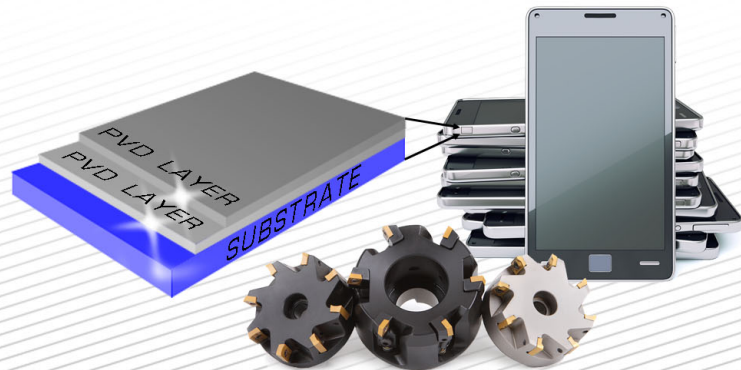
Automotive Lighting

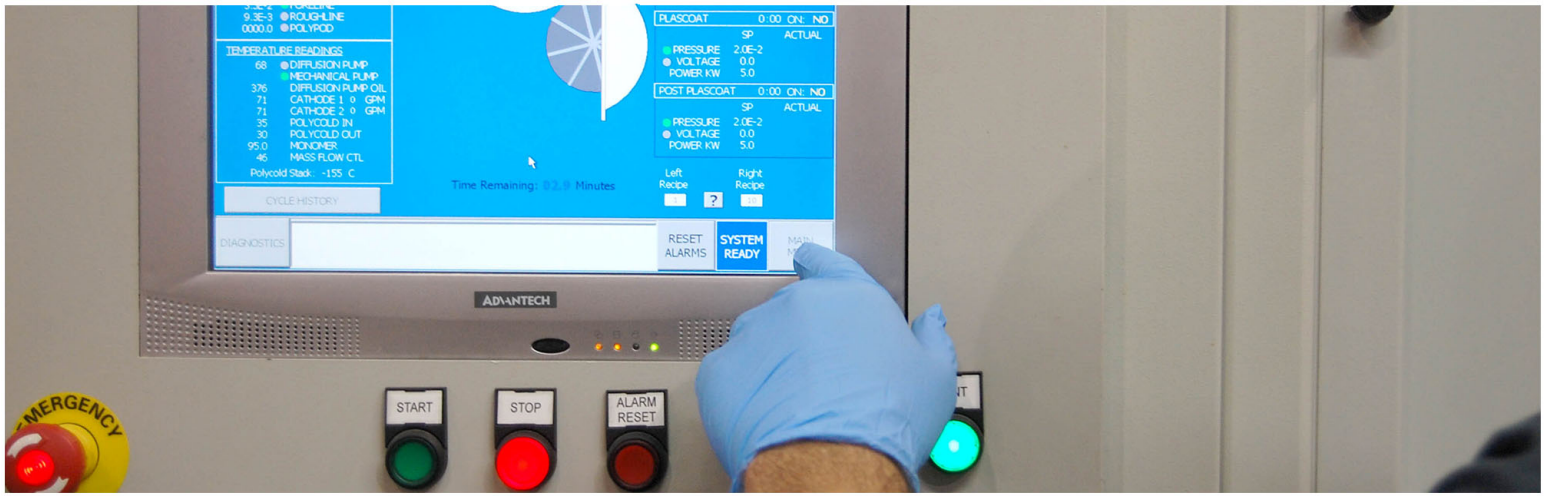


Electroplating Replacement



Multi-Layer





BENEFITS

- Ergonomic design for easy operation
- Fast 3.5 minute cycle for increased throughput
- Removable shielding for easy maintenance
- On-board gantry system for simple target changes/cathode maintenance.
- Network compatibility for online diagnostics or troubleshooting (ethernet or phone line connection required)
- MVS high power patented cathodes yield much brighter finishes with up to 45% target utilization

SPECIFICATIONS

TOOLING DIMENSIONS

- Diameter: 28 inches (711.20mm)
- Height: 48 inches (1219.20mm)
- Max tooling weight: 200 lbs. (90kg)

SYSTEM DIMENSIONS

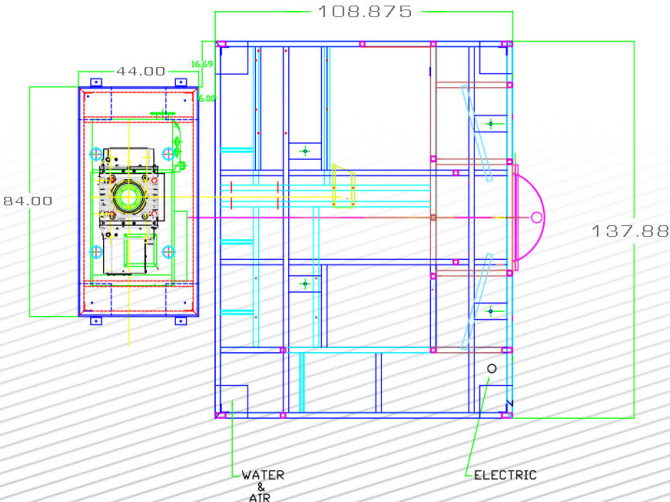
- Width: 137.88 inches (3.50m)
- Depth: 152.875 inches (3.88m)
- Height: 110.5 inches (2.81m)
- Weight: 20,000 Lbs.

PUMP PACKAGE

- Leybold SV630 pump
- Leybold WH4400 blower



Top Down View



SUBSTRATE TYPES

- All vacuum stable plastics (Commonly BMC, PCABS, PC, etc...)

DEPOSITION SOURCES

- Sputter, Evaporation, Reactive Sputter, E-Beam, Cathodic Arc, etc...

DEPOSITION MATERIALS

- Metals, compounds, alloys, and dielectric materials

SYSTEM CONTROL

- PLC based with Windows XP embedded Avantech PC color touchscreen

POWER

- Four 30kw Huettinger power supplies (60kw per cathode) - upgrade to 90kw per cathode available
- Electrical: 480V/3 phase/60hz (USA compliant)
- 460V/3 phase/50hz (Asia compliant)
- 380V/3 phase/50hz (EU-CE compliant)



Mustang's Colt Series small batch, fast cycle deposition system is designed to maximize production. It produces in rates that can synchronize with injection molding machines and optimize your throughput potential. Mustang offers a single-chamber, double-door design for increased productivity and versatility.

The Colt Series is designed for high throughput environments running 24/7 production. For quality control, the Colt Series offers network compatibility, on-board diagnostics, and a multi-user system interface that is simple to learn and operate.

SERVICE & SUPPORT

Mustang Vacuum Systems and our global service partners provide onsite installation, repair service, preventative maintenance, applications and service training. Colt series systems come standard with a dedicated VPN or analog telephone connection, allowing Mustang's service and support team to remotely diagnose and resolve any problems. We are available to provide support for your system 24/7.

CONFIGURATIONS

Standard Configuration

- pump package behind
- 2 manual doors

Elevated Pump Package

- optimized floor space
- 2 manual doors

Automation Package

- automated door motion for single position loading
- safety enclosure
- 3 door option available

