



VMS SERIES

Large Batch, Fast Cycle
Evaporation Deposition System

APPLICATIONS



Mustang manufactures the most reliable systems on the market. The VMS system is designed with ease of maintenance in mind. With over 90% uptime, customers can stay focused on meeting their production demands.

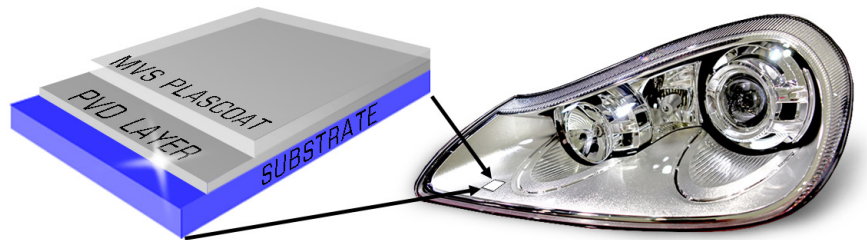
TYPICAL APPLICATIONS

- Automotive Lighting
- Automotive Wheels
- LED Lighting Fixtures
- Electroplate Replacement
- Optics
- Decorative
 - Automotive Interior/Exterior Trim
 - Cosmetics
 - More...

STANDARD PROCESS STEPS

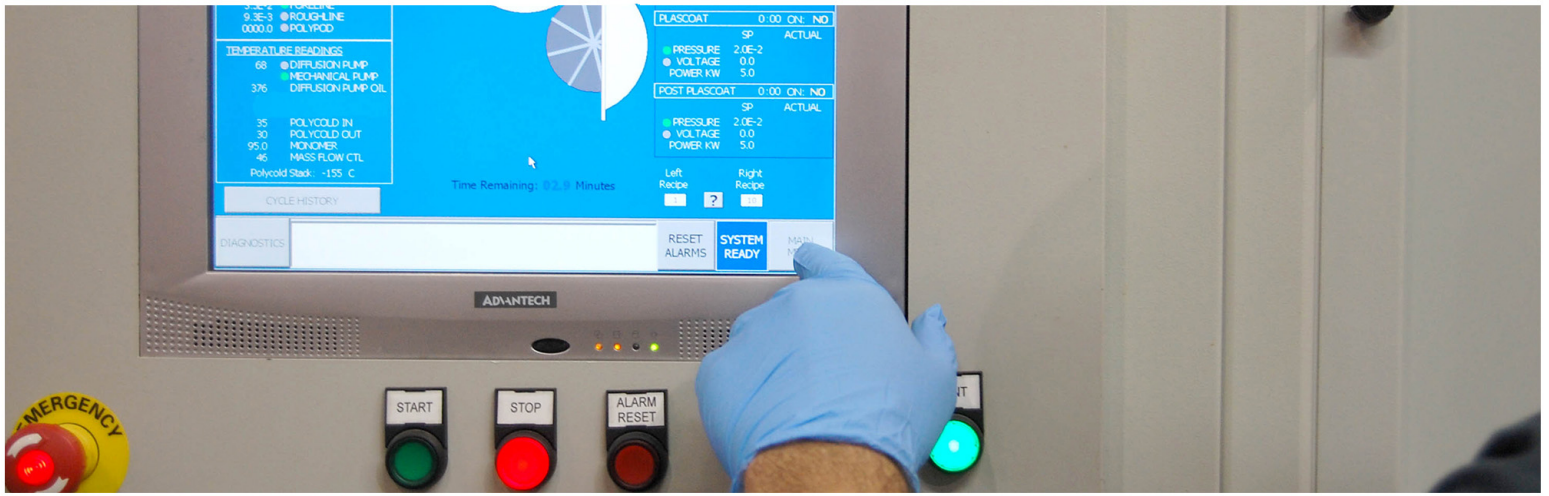
| | UV CURED BASE COAT | PLASMA PRE-TREATMENT | PVD LAYER | MVS PLASCOAT | UV CURED TOP-COAT |
|--------------------------|--------------------|----------------------|-----------|--------------|-------------------|
| AUTOMOTIVE LIGHTING | ✓ | ✓ | ✓ | | |
| ELECTROPLATE REPLACEMENT | ✓ | | ✓ | | ✓ |

Automotive Lighting



Electroplating Replacement





BENEFITS

- Ergonomic design for easy operation
- Fast 12-15 minute cycle for increased throughput
- Removable shielding for easy maintenance
- Quick Change Fixturing
- Network compatibility for online diagnostics or troubleshooting (ethernet or phone line connection required)
- Mustang's superior patented in-chamber topcoat that passes all forward lighting specifications.

SPECIFICATIONS

TOOLING DIMENSIONS

- VMS 1000 - Either eight (8) 430mm (16.92 inches) or six (6) 540mm (21.25 inches) planets with a total length of 1000mm (42.52 inches).
- VMS 1000 - Either eight (8) 430mm (16.92 inches) or six (6) 540mm (21.25 inches) planets with a total length of 1500mm (59.05 inches).

SYSTEM DIMENSIONS

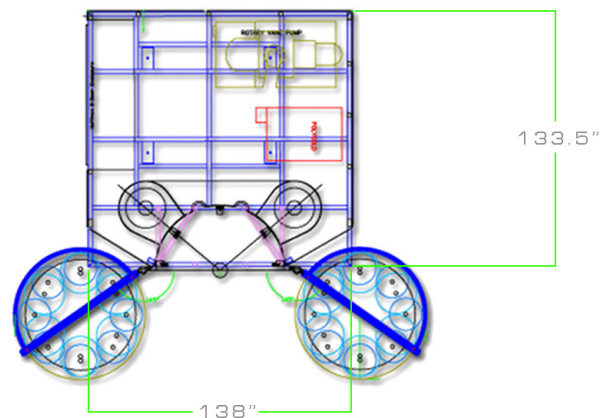
- Width: 138 inches (3.51m)
- Depth: 133.5 inches (3.39m)
- Height: 109 inches (2.77m)
- Weight: 25,000 Lbs.

PUMP PACKAGE

- Leybold SV630 Pump
- Leybold WH4400 Blower
- (2) 20" Varian Diffusion Pumps



Top Down View



SUBSTRATE TYPES

- All vacuum stable plastics (Commonly BMC, PCABS, PC, etc...)

DEPOSITION SOURCES

- Evaporation

DEPOSITION MATERIALS

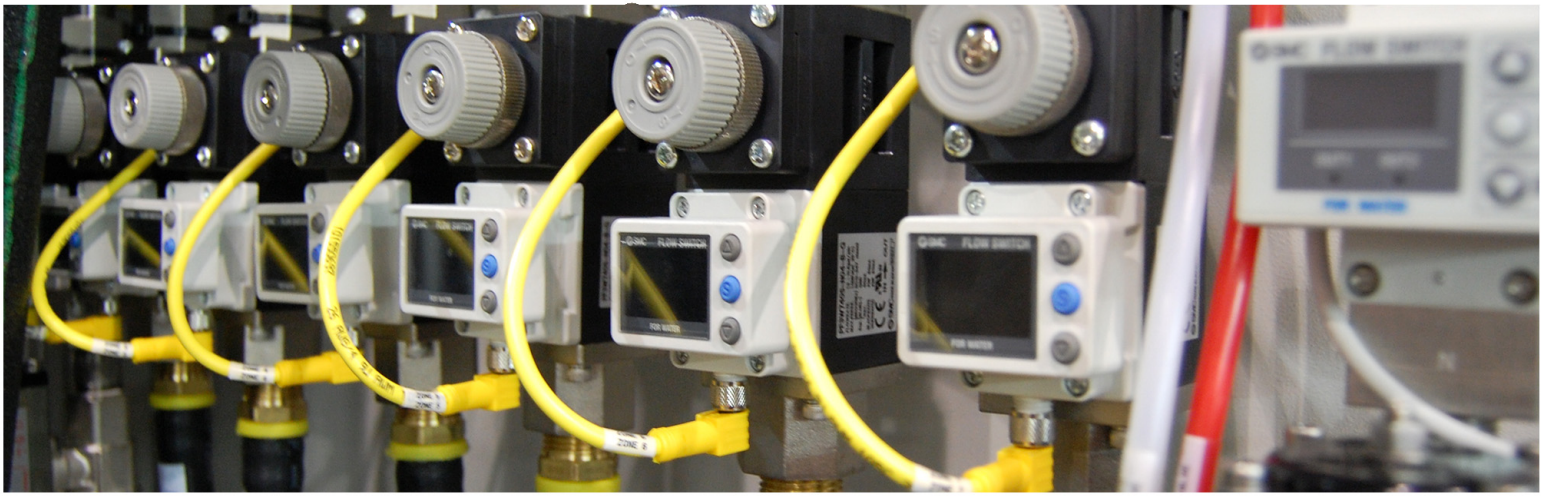
- Aluminum

SYSTEM CONTROL

- PLC based with Windows XP embedded Avantech PC color touchscreen

POWER

- Electrical: 480V/3 phase/60hz (USA compliant)
- 460V/3 phase/50hz (Asia compliant)
- 380V/3 phase/50hz (EU-CE compliant)



The VMS 1000 and VMS 1500 are ergonomically-friendly alternatives to horizontal batch coating machines. The Mustang VMS systems offer one of the shortest evaporation cycles on the market, approximately 14 minutes, giving users a high-quality coating with Mustang's superior patented in-chamber topcoat that passes all forward lighting specifications.

The VMS Series is designed for high throughput environments running 24/7 production. For quality control, the VMS Series offers network compatibility, on-board diagnostics, and a multi-user system interface that is simple to learn and operate.

SERVICE & SUPPORT

Mustang Vacuum Systems and our global service partners provide onsite installation, repair service, preventative maintenance, applications and service training. VMS series systems come standard with a dedicated VPN or analog telephone connection, allowing Mustang's service and support team to remotely diagnose and resolve any problems. We are available to provide support for your system 24/7.

